

METFLO® INSTALOK™ COUPLINGS

INSTALLATION INSTRUCTIONS

IMPORTANT!

Couplings are shipped in ready-to-use condition and should not be disassembled.

PREPARING FOR INSTALLATION

- Verify OD dimension marked on each clamp with the size of tube you intend to join. **(Figure 1)**
- Coupling has been factory-sized for proper fit and inspected before shipping.
- Clean outside of tube to make it free of dirt and grease which can cause coupling slippage
- Make sure tube is free of jagged ends and burrs, which could cause material blockages.
- Make sure outside surface of tube is dry.

ASSEMBLING TUBE AND COUPLING

- Slide coupling over one tube until end of that tube is at the center of the coupling. **(Figure 2)**
- Tighten the clamp on the end of the coupling which the tube is inserted.
- Insert other end of tube that you intend to join. Butt the tube ends together and tighten the clamp at the end of the coupling. **(Figure 3)**

TIGHTENING THE COUPLING

- Tighten the bolts to torque shown in chart below. Bolts should not be overtightened. **(Figure 4)**
- The assembly is completed when the coupling clamps are tightened to the recommended torque.

Bolt Size	Ft. Lbs. Torque
7/16"	50 Ft. Lbs.



512 West Gorgas Street P.O. Box 3912 Louisville, OH 44641

Phone: 800-860-8823

Fax: 330-875-7155

www.metflo.com

H-P Products, Inc. is certified to ISO 9001: 2000

IMPORTANT!

Figure 1

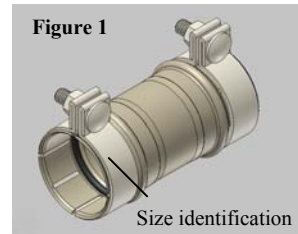


Figure 2

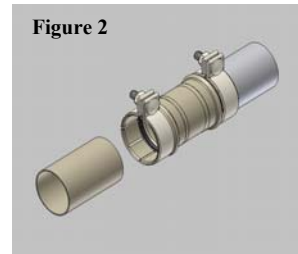


Figure 3

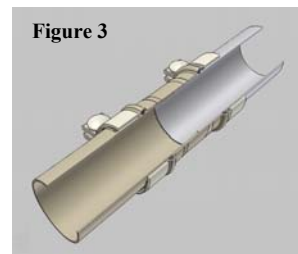


Figure 4

